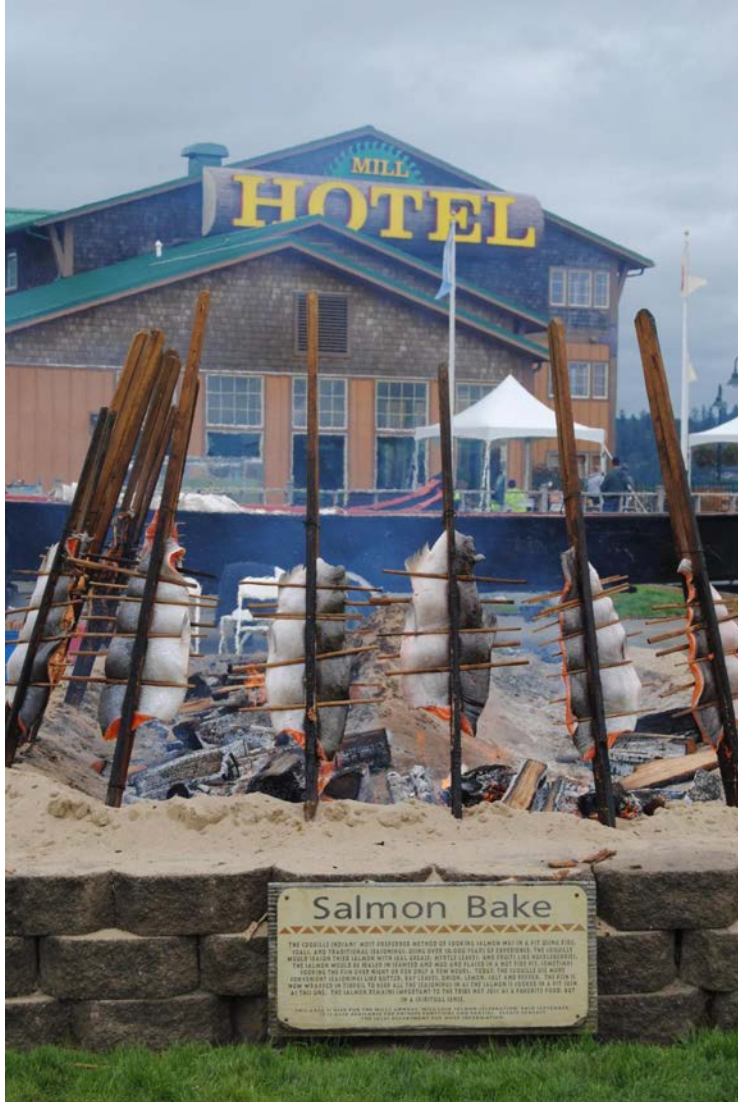


TRIBAL1

The Mith-ih-Kwuh Economic Development Corporation

<http://tribal.one>

CEDCO: The Mill Properties



The Mill Casino
The Mill Hotel
The Mill RV Park
The Laundry Mill





Our Mission:

*"To help the Coquille Indian
Tribe achieve self-sufficiency
through Economic
Development."*



Board of Directors

SBA 8(a)
Business
Development
Program



KEY PROJECTS



HATFIELD ELEVATOR T1/RJS



GENERATORS AT SCHRIEVER AFB



BONNEVILLE DAM T1/RJS

TRIBAL1

BROADBAND



TRIBAL1

CONSTRUCTION



Other High Visibility Projects

Peterson Air Force Base



Cheyenne Mountain Air Force Station





Fort Carson, CO - USACE Alpha Ramp Paving

Satisfied Clients



FEMA



U.S. AIR FORCE



TRIBAL1

Professional Services

Your Staffing Solution

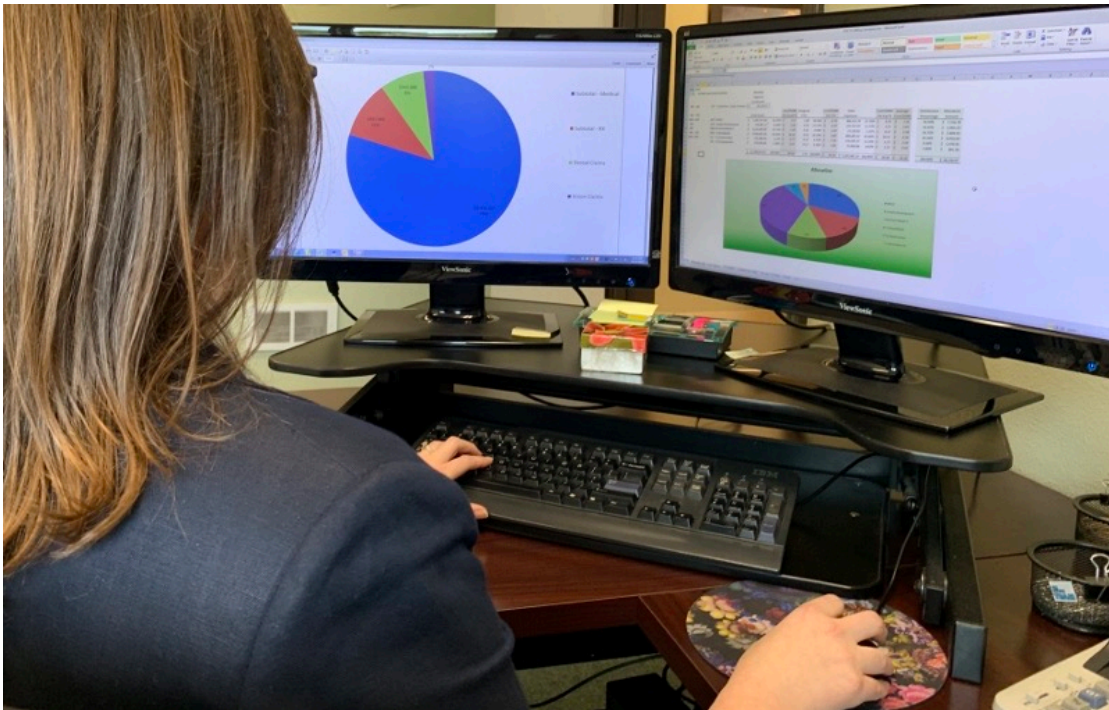
our clients
focus on
what they
do best

*Native American Tribally
owned*

SBA 8(a) CERTIFIED

HUBZone certified

- ✓ Accounting services, including federal contractors
- ✓ Payroll management
- ✓ Job cost reporting
- ✓ Internal and Revenue auditing
- ✓ Procedure writing
- ✓ Internal control development



- ✓ SMB and Enterprise IT infrastructure management
- ✓ User IT support
- ✓ Complete technology solutions to meet new and existing business needs

Advantages of contract staffing



- **Cost Effective**
- **Instant impact**
- **Flexibility**
- **Lowers business liability**
- **Force Multiplier**



U.S. Department of Agriculture
Natural Resources Conservation Service

Accounting, business, and administrative subject matter expertise supporting the establishment, memorialization, administration, tracking, reporting, and closure of USDA Contracts, Grants, and Agreements.

Fiscal Agent for the State of Oregon's Covid-19 Artist Relief Grant Program overseeing and controlling \$1,238,802 in grant funds including processing, distributing, monitoring, and closing 646 awards under the program



Communications, outreach and education for FDA
Center for Tobacco Products

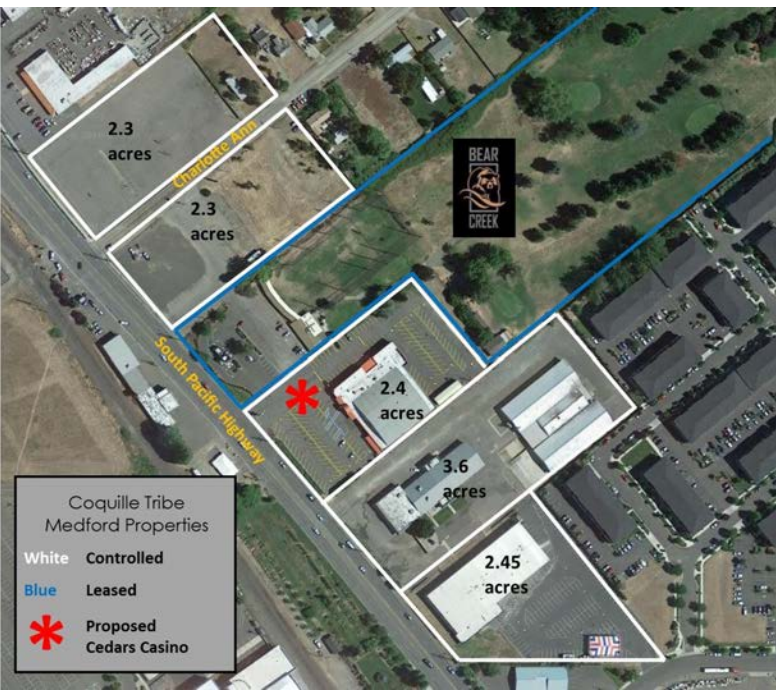
 **U.S. FOOD & DRUG**
ADMINISTRATION

Tribal One
Professional
Services leverages
experience and
subject matter
experts to help
customers achieve
their mission

Staffing & Finance Team based in Medford

- 90 employees in Southern Oregon Operations
- IT
- Finance/Payroll



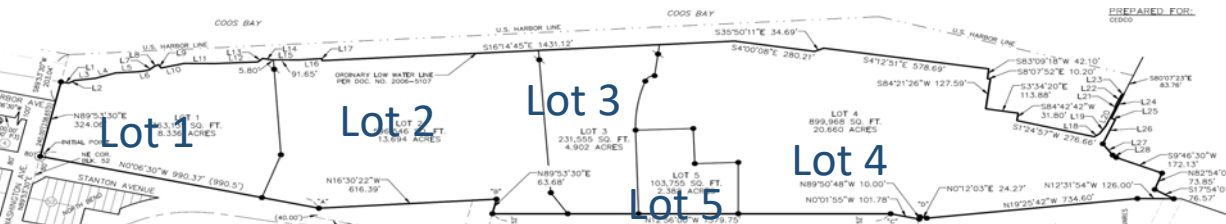


THE CEDARS

at BEAR CREEK



Ko-Kwel Wharf Master Plan





Compass by Margaritaville

*“Where
Southern
Oregon
Golf
Begins”*



- Authentic – We know we we are and don't make any bones about it
- Approachable - All skill levels, all ages, something for everyone



Investment

- Irrigation and grounds/fairway investment
- Natural Putting Course
- Pro Shop Remodel
- Driving Range Remodel
- Top Tracer Bays

Questions?

