



**Southern Oregon Regional  
Economic Development, Inc.**  
*Wildly Serious About Business*

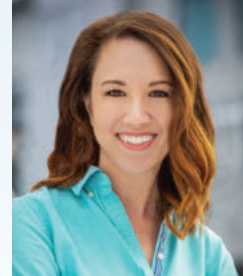
# SORED Loan Program

## ABOUT

SORED is a private, membership-based, non-profit organization, governed by a board of directors. Its six-person staff is charged with local business expansion and new business recruitment efforts, financial assistance to start-up companies through its business loan fund, and management of Enterprise Zones in Jackson and Josephine Counties. The agency was formed as a regional economic development agency in 1987. Learn more at [www.soredi.org](http://www.soredi.org)

SORED has a loan fund that helps to provide financing for small businesses who may have limited access to capital. The goal of these funds is to help benefit and grow Southern Oregon's business environment.

Funds are typically issued on a term lending basis. Interest is typically higher than traditional financing because of the inherent risk associated with these types of businesses.



**Kim Young**

*Analysis & Development Manager*

Cell: (208) 867-4461

Tel: (541) 200-2176

## ELIGIBLE BUSINESSES

- ✓ Have a complete business plan
- ✓ Have (or will have) principal operations in Jackson or Josephine County
- ✓ Will create new jobs in Southern Oregon
- ✓ Have (or are forecasted to have) positive cashflow
- ✓ Are for-profit and actively registered to business with the state and their local jurisdiction (if required to do so)
- ✓ Have collateral (personal or business) to support the loan, if needed
- ✓ Do not qualify for traditional financing or have a gap financing need

## GENERAL FUNDING PARAMETERS

- ▶ Loan request between \$50,000-\$250,000
- ▶ Rates between 7% and 10%; 1.5% loan origination fee + fees
- ▶ Fixed terms not to exceed life of asset financed
- ▶ Collateralized by business or personal assets
- ▶ Flexible repayment options

### **SORED is an Equal Opportunity Lender.**

We do not discriminate on the basis of race, color, national origin, religion, sex, handicap, or familial status (having children under the age of 18).

For information, email [info@soredi.org](mailto:info@soredi.org)